



## SECTION - H - INDEX

	PAGE NUMBER
<b>RED OAK STAIR PARTS</b>	
NEWELS	H-2
BALUSTERS	H-2
NEWEL AND BALUSTER DRAWINGS	H-3
RAIL AND FITTING DRAWINGS	H-4
COLONIAL RAIL / PLOWED RAIL	H-5
HANDRAIL AND WALLRAIL	H-5
PLOWED SHOE RAIL	H-5
RAIL FITTINGS	H-5
RAIL FITTINGS	H-5
HARDWARE, STEPS, AND ACCESSORIES DRAWINGS	H-6
BALUSTER AND NEWEL HARDWARE	H-7
ROSETTES	H-7
STARTING STEPS	H-7
FALSE TREADS & RISERS	H-7
STAIR BRACKETS	H-7
MOULDING	H-7
<b>WHITE OAK STAIR PARTS</b>	
NEWELS	H-8
RAILS	H-8
ROSETTES	H-8
<b>IRON STAIR PARTS</b>	
BALUSTERS	H-9
BALUSTER ACCESSORIES	H-9
IRON STAIR PART DRAWINGS	H-9
<b>PAINT GRADE STAIR PARTS</b>	
NEWELS	H-10
RAILS	H-10
ROSETTES	H-10
BALUSTERS	H-10
PAINT GRADE STAIR PARTS DRAWINGS	H-11
RED OAK TREADS AND RISERS	H-12
RED OAK RETRO TREADS WHITE	H-12
OAK TREADS AND RISERS PINE	H-13
TREADS AND RISERS	H-14
TREAD DRAWINGS	H-15
DISCONTINUED STAIR PARTS	H-16 & 17



## Red Oak Stair Parts

---

<u>Oak Newels</u>		<u>(for post to post 6010 or 6010-P rail systems)</u>	
4040	3" x 48" Starting Newel	ea.	\$58.50
4042	3" x 57-5/8" Starting Newel	ea.	\$80.20
4045	3" x 57-5/8" Landing Newel	ea.	\$80.20
4055	3" x 72" Intermediate Newel	ea.	\$96.30

<u>Oak Newels</u>		<u>(for over the post 6010 or 6010-P rail systems)</u>	
4010	3" x 43" Starting Newel	ea.	\$64.70
4015	3" x 62" Landing Newel	ea.	\$78.40

<u>Oak Box Newels</u>			
4075	3 1/2" x 63 3/4" Landing Newel	ea.	\$120.70
4075SL	4-1/2" x 22-1/8" Sleeve for 4075 Newel	ea.	\$34.90
4091	6-1/4" x 55" Plain Newel	ea.	\$199.60

<u>Oak Balusters</u>		<u>(for 6010 or 6010-P rail systems)</u>		
5015	1 1/4" x 36"	"	ea.	\$11.50
	1 1/4" x 39"	"	ea.	\$12.00
	1 1/4" x 42"	"	ea.	\$12.40

**POST TO POST NEWELS**



4040 Oak      4042 Oak      4045 Oak      4055 Oak

**BOX NEWELS**



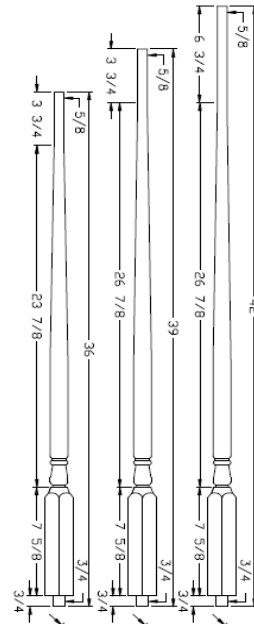
4075SL      4075      4091

**OVER THE POST NEWEL**



4010 Oak      4015 Oak

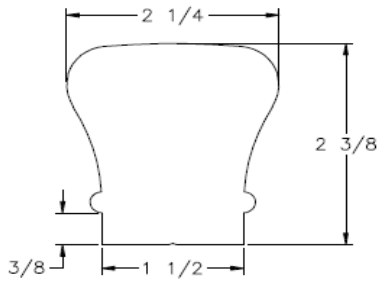
**BALUSTERS**



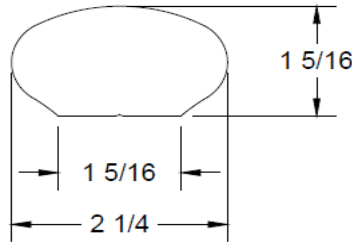
5015 Oak



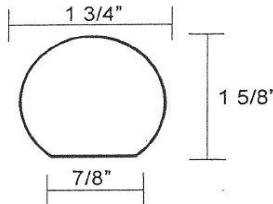
**RAILS**



6010 Oak  
Available  
1-1/4" Plowed

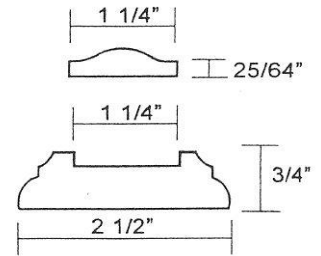


6042 Oak  
Wall Rail



6040 Oak  
Wall Rail

SW-6050 Oak Fillet



6045 Oak  
Shoe Rail

**STARTING FITTINGS**



Starting Easing  
7010



Opening Cap  
7019



Left & Right Volute  
7030 & 7035



Left & Right Turnout  
7040 & 7045

**EASINGS, QUARTERTURNS, & GOOSENECKS**



Up Easing  
7012



Over Easing  
7013



90deg Qtr Turn Cap  
7021



Level Qtr Turn  
7011



2 Riser, No Cap  
7099



## Red Oak Stair Parts

### Oak Rail Stock

6010	Traditional Rail with Solid Top	10'	ea.	\$88.50
	(Top ply is solid in 10' & 12' lengths;	12'	ea.	\$106.10
	one (1) Fingerjoint in 16' lengths)	16'	ea.	\$141.50
6010-P	Plowed Traditional Rail Solid Top W/Fillet	10'	ea.	\$109.40
	(Top ply is solid in 10' & 12' lengths;	12'	ea.	\$131.80
	one (1) Fingerjoint in 16' lengths)	16'	ea.	\$175.10
6042	Wall Rail 2 1/4" x 19/32"	12'	ea.	\$45.90
	(Fingerjoint every 4' all lengths)	16'	ea.	\$68.50
6040	Wall Rail 1 3/4" x 1 5/8"	12'	ea.	\$48.90
	(Fingerjoint every 4' all lengths)	16'	ea.	\$65.20
6045	Plowed Shoe Rail W/Fillet	12'	ea.	\$47.90
	(Fingerjoint every 4' all lengths)	16'	ea.	\$63.20
6050	Traditional Fillet ( Random Length Only )		lft.	\$1.00

### Oak Rail Starting Fittings ( for 6010 or 6010-P Rail )

7010	Starting Easing with CAP	ea.	\$23.40
7019	Opening Cap	ea.	\$22.50
7030	Left Hand Volute	ea.	\$57.90
7035	Right Hand Volute	ea.	\$57.90
7040	Left Hand Turnout	ea.	\$36.30
7045	Right Hand Turnout	ea.	\$36.30

### Up Easings, Caps, Quarterturns

7012	Up Easing	ea.	\$13.80
7013	Over Easing	ea.	\$14.50
7021	Quarterturn Cap	ea.	\$19.60
7011	Quarterturn	ea.	\$15.80

### Goosneck Fittings

7099	Straight	2 Riser	ea.	\$32.70
------	----------	---------	-----	---------

PRICE SUBJECT TO CHANGE WITHOUT NOTICE



**ROSETTES AND HARDWARE**



7026  
Round Rosette



7037  
Oval Rosette



3001  
Rail Bolt & Plug



3044  
Rail Bolt Wrench



3076  
Dowel Screw



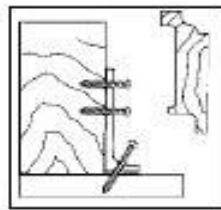
3033 & 3032  
Rail & Dowel Screw Driver



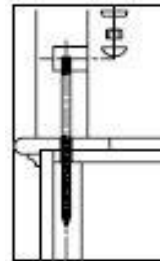
3127  
Heavy Duty  
Rail Bracket



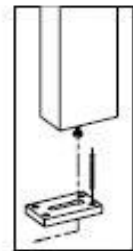
3004  
NEWEL MOUNTING KIT



3009 & 3019  
L-Bracket Newel Fastener  
For 3" & 3-1/2" Newel



3008-10  
Sure Tite Fastener



3005  
Keylock Fastener

**TREADS, RISERS, BRACKETS, STEPS, AND MOULDING**



8071 Tread  
Cap With Mitered Return



8072 Tread  
False End non Mitered



8076  
Riser Cap  
5-1/2" x 8"



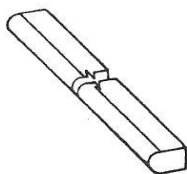
7029  
Scroll Bracket



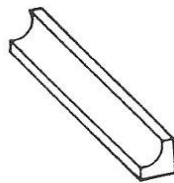
7028  
Plain Bracket



8010-2  
False Starting Step  
Reversible



8080  
TREAD NOSING



8095  
COVE



8422  
Shoe



8010 STARTING STEP  
BULL NOSED ONE END



## Red Oak Stair Parts

### Rail / Baluster Accessories

3001	Rail Bolt W/1" Oak Plug		ea.	\$0.70
3076	Dowel Screw	( 5/16" x 2 1/2")	ea.	\$0.40
3044	Rail Bolt Wrench		ea.	\$7.40
3033	Dowel Screw Driver		ea.	\$8.20
3032	Rail Bolt Driver		ea.	\$31.20
3127-SN	Heavy Duty Rail Bracket	Satin Nickel	ea.	\$5.30
3127-BZ	Heavy Duty Rail Bracket	Oil Rubbed Bronze	ea.	\$5.30

### Oak Newel Fastener Hardware

3004	Newel Mounting Kit		ea.	\$5.60
3008-10	Sure TITE Newel Fastener		ea.	\$7.50
3005	Keylock Newel Fastener		ea.	\$15.20
3009	L-Bracket Newel Fastener	For 3" Newel	ea.	\$14.70
3019	L-Bracket Newel Fastener	For 3 1/2" Newel	ea.	\$16.60

### Oak Starting Steps

8010-48	48" Bull Nosed One End	( Reversible )	ea.	\$252.40
8010-60	60" Bull Nosed One End	( Reversible )	ea.	\$294.30
8010-C&S	Oak Cove & Shoe Set		set	\$16.30
8015-C&S	Oak Cove & Shoe Set		set	\$29.90

### Oak False Tread & Riser Ends

8071L	1/2" x 5 1/2" x 12 5/8" Left Hand Tread End		ea.	\$17.90
8071R	1/2" x 5 1/2" x 12 1/2" Right Hand Tread End		ea.	\$17.90
8072	1/2" x 5 1/2" x 12 5/8" Wall Side Tread End		ea.	\$10.60
8076	1/2" x 5 1/2" x 8" False Riser End		ea.	\$5.70

### Oak Stair Brackets

7028	5/16" x 8" x 11 1/2" Plain SOLID OAK		ea.	\$12.00
7029	5/16" x 8" x 11 1/2" Scroll SOLID OAK		ea.	\$12.00

### Oak Mouldings

8080	1 1/4" x 1 1/32" Tread Nosing		lft.	\$3.40
8095	1/2" x 3/4" Cove		lft.	\$1.00
8422	1/2" x 3/4" Shoe		lft.	\$1.00

### Oak Rosettes

7026	4 1/2" Round		ea.	\$5.10
7037	4" x 5 1/2" Oval		ea.	\$5.20

PRICE SUBJECT TO CHANGE WITHOUT NOTICE



## White Oak Stair Parts

### White oak Handrail & Wall Rail

6010-WO	Traditional Rail with Solid Cap (Top ply is solid in 12' lengths; one Fingerjoint in 16' lengths)	12'	ea.	\$118.20
		16'	ea.	\$157.60
6010-P-WO	Plowed Traditional Rail with Solid Cap W/Fillet (Top ply is solid in 12' lengths; one Fingerjoint in 16' lengths)	12'	ea.	\$195.30
		16'	ea.	\$260.40
6040-WO	Wall Rail 1 3/4" x 1 5/8" (Top ply is solid in 12' lengths; one Fingerjoint in 16' lengths)	12'	ea.	\$110.90
		16'	ea.	\$144.80

### White oak Rosettes

7037-WO	4" x 5 1/2" Oval Rosette	ea.	\$15.60
---------	--------------------------	-----	---------

### White oak Box Newels

4091-WO	6-1/4" x 55" Plain Newel	ea.	\$268.30
---------	--------------------------	-----	----------

#### NEWELS



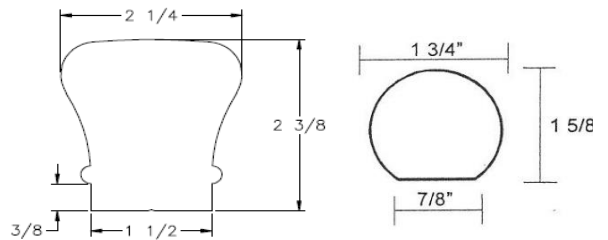
4091  
BOX NEWEL

#### ROSETTES



7037  
OVAL ROSETTE

#### RAILS



6010

6040

PRICE SUBJECT TO CHANGE WITHOUT NOTICE



## Iron Stair Parts

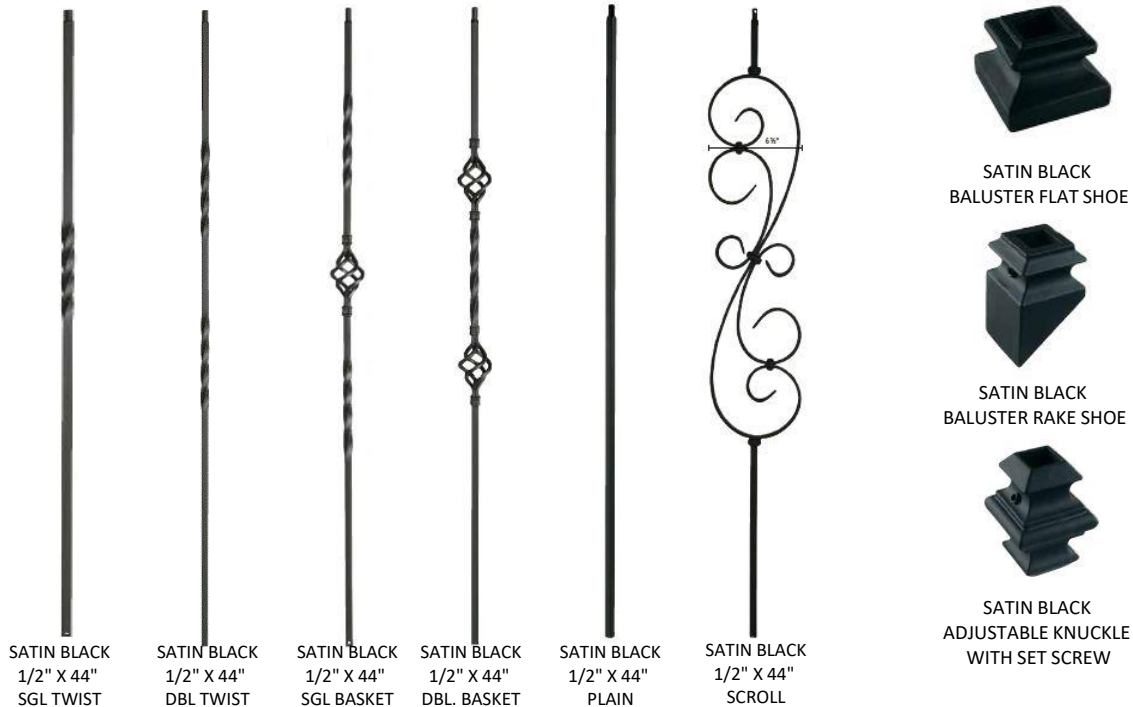
### Iron Balusters

LIH-HOL1TW44-LSB	1/2" x 44"	Single Twist	Lite Iron Satin Black	ea.	\$5.00
LIH-HOL2TW44-LSB	1/2" x 44"	Double Twist	Same	ea.	\$4.90
LIH-HOL1BASK44-LSB	1/2" x 44"	Single Basket	Lite Iron Satin Black	ea.	\$8.20
LIH-HOL2BASK44-LSB	1/2" x 44"	Double Basket	"	ea.	\$9.90
LIH-HOLPLA44-LSB	1/2" x 44"	Plain	"	ea.	\$3.80
LIH-HOL30144-MB	1/2" x 44"	Scroll	Satin Black	ea.	\$19.40

NOTE : Lite Iron Balusters are Hollow except for the Basket area and are easy to cut. The structural integrity is equal to a Solid Baluster.

### Accessories for Forged Balusters

LI-ALM06-LSB	Flat Shoe with Set Screw	ea.	\$1.20
LI-ALAK01-LSB	Adjustable Knuckle with Set Screw	ea.	\$1.90
LI-ALPSH02-LSB	Rake Shoe with Set Screw	ea.	\$1.60
LI-3704	Epoxy Kit : Includes built in dispensing system, 5oz Adhesive cartridge and nozzle. Open work time is 6 minute. Fills approximately 35 holes depending on the hole size.	ea.	\$29.60



PRICE SUBJECT TO CHANGE WITHOUT NOTICE



## **Paint Grade Stair Parts**

Stair Parts Below are Paint Grade Hemlock or Poplar depending on what is available

### Newels ( For Post to Post for 6010 Rail System )

4004-P	3 1/4" x 48" Starting Newel		ea.	\$62.30
4040-P	3 1/4" x 48" Starting Newel with Turned Center		ea.	\$50.50
4005-P	3 1/4" x 60" Landing Newel		ea.	\$67.70
4046-P	3 1/4" x 60" Landing Newel with Turned Center		ea.	\$68.40

### BOX Newels

4091-P	6-1/4" X 55-3/4" Poplar Plain Box Newel		ea.	\$178.80
--------	---	--	-----	----------

### Rail Stock

6010-P	2 1/4" x 2 3/8"	12'	ea.	\$56.90
		16'	ea.	\$92.80
6040-P	1 3/4" x 1 5/8"	12'	ea.	\$26.40
		16'	ea.	\$50.10

### Oval Wall Rosette

7037-P	4" x 5-1/2" Oval Rosette		ea.	\$13.20
--------	--------------------------	--	-----	---------

## **Primed Stair Parts**

### Primed Balusters ( for SW-6010 or SW-6010-P Rail )

PR5015	1 1/4" x 34"	Same	ea.	\$4.80
	1 1/4" x 36"	"	ea.	\$5.10
	1 1/4" x 39"	"	ea.	\$5.50
	1 1/4" x 42"	"	ea.	\$6.00
PR5067	1 1/4" x 34"	Turned Center	ea.	\$4.70
	1 1/4" x 36"	Same	ea.	\$5.30
	1 1/4" x 39"	"	ea.	\$5.70
	1 1/4" x 42"	"	ea.	\$6.10
PR5060	1 1/4" x 42"	S4S	ea.	\$5.70

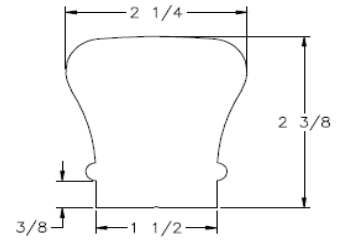
**Note: ( 1 ) Type of wood used in Paint grade stair parts is MILL OPTION.  
PRICE SUBJECT TO CHANGE WITHOUT NOTICE**

**NEWELS**

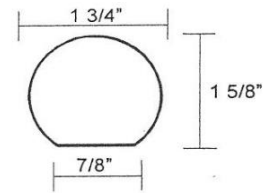


4004      4040      4005      4046      4091

**RAILS**



6010



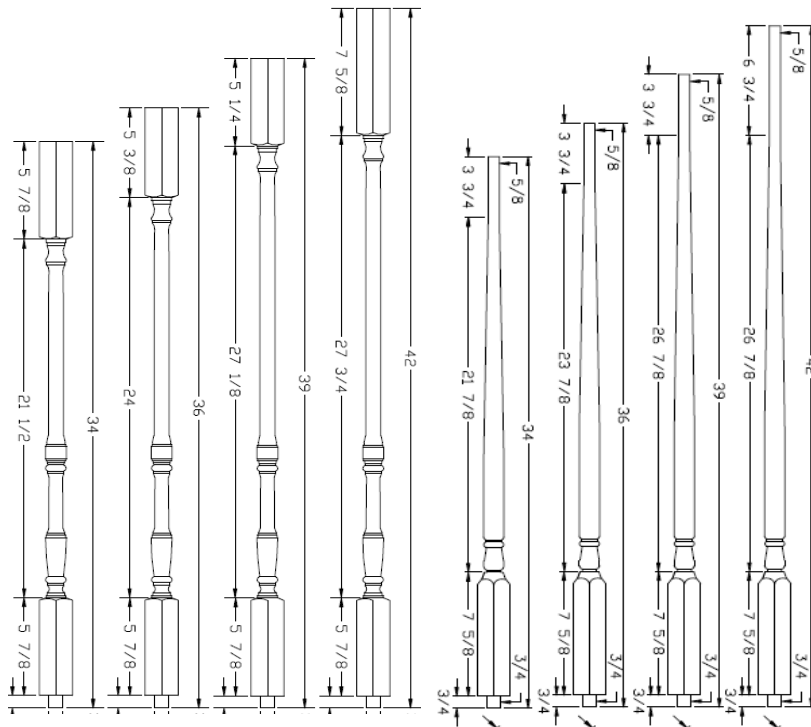
6040

**BALUSTERS**

**ROSETTES**



7037  
OVAL ROSETTE



PR5067

PR5015

PR5060





**Red Oak Stair Treads & Risers**  
By Young Manufacturing

---

**8070 Plain Tread Red Oak**

36"		1 1/32" x 11 1/2"	ea.	\$25.60
42"		1 1/32" x 11 1/2"	ea.	\$30.40
48"		1 1/32" x 11 1/2"	ea.	\$35.40
54"		1 1/32" x 11 1/2"	ea.	\$41.70
60"		1 1/32" x 11 1/2"	ea.	\$46.10
72"		1 1/32" x 11 1/2"	ea.	\$55.00

**8070MR Single Return Tread Red Oak**

42"		1 1/32" x 11 1/2"	ea.	\$37.40
48"	Retrun treads width is the overall size including the return	1 1/32" x 11 1/2"	ea.	\$42.30
54"		1 1/32" x 11 1/2"	ea.	\$48.70
60"		1 1/32" x 11 1/2"	ea.	\$53.10
72"		1 1/32" x 11 1/2"	ea.	\$62.00

**8075 Riser Red Oak**

42"		3/4" x 7 1/2"	ea.	\$16.70
48"		3/4" x 7 1/2"	ea.	\$19.40
60"		3/4" x 7 1/2"	ea.	\$25.10

---

**8090 Landing Tread Red Oak**

3 1/2" Lft. \$3.50

**8090-5 Landing Tread Red Oak**

5 1/4" Lft. \$5.30

**8080-13 Tread Return Nosing 1-1/16" X 1-1/4" X 13"**

ea. \$1.70

**RETROTREADS PLAIN**

42"		5/8" x 11 1/2"	ea.	\$36.30
48"		5/8" x 11 1/2"	ea.	\$42.30

**8080 Reversible Return Retronosing 1" x 1-7/8" x 14-3/4"**

ea. \$5.70

MISCELLANEOUS      OAK      TREAD MACHINING

Contact Barnett for pricing on double return treads

To CUT DOWN a Tread or Riser Length      ADD      \$10.00

---

PRICE SUBJECT TO CHANGE WITHOUT NOTICE



**White Oak Stair Treads & Risers**  
*By Young Manufacturing*

**8070 Plain Tread White Oak**

42"	1 1/32" x 11 1/2"	ea.	\$44.20
48"	1 1/32" x 11 1/2"	ea.	\$50.60
54"	1 1/32" x 11 1/2"	ea.	\$59.60
60"	1 1/32" x 11 1/2"	ea.	\$66.00
72"	1 1/32" x 11 1/2"	ea.	\$78.80

**8070MR Single Return Tread White Oak**

42"	1 1/32" x 11 1/2"	ea.	\$51.20
48"	1 1/32" x 11 1/2"	ea.	\$57.70
54"	Retrun treads width is the overall size including the return	ea.	\$66.70
60"	1 1/32" x 11 1/2"	ea.	\$73.10
72"	1 1/32" x 11 1/2"	ea.	\$85.90

**8075 Riser White Oak**

42"	3/4" x 7 1/2"	ea.	\$24.00
48"	3/4" x 7 1/2"	ea.	\$27.40
60"	3/4" x 7 1/2"	ea.	\$35.60

**8090-5 Landing Tread White Oak**

5 1/4" Lft. \$7.80

**8080-13 Tread Return Nosing 1-1/16" X 1-1/4" X 13"**

ea. \$2.00



**EDGE GLUED SOUTHERN PINE  
TREADS AND RISERS  
Manufactured By Barnett Millworks Inc.**

---

**Stair Treads Plain**

			<i>C &amp; BETTER</i>	<i>CARPET</i>
42"	1" x 11 1/2"	ea.	\$24.00	\$13.00
48"	1" x 11 1/2"	ea.	\$28.00	\$14.00
60"	1" x 11 1/2"	ea.	\$40.00	\$18.00

**Stair Treads Plain Single Return**

42"	1" x 11 1/2"	ea.	\$47.00
48"	1" x 11 1/2"	ea.	\$51.00
60"	1" x 11 1/2"	ea.	\$62.00

**Stair Risers**

			<i>C &amp; BETTER</i>	<i>CARPET</i>
42"	3/4" x 7 1/2"	ea.	\$12.00	\$8.00
48"	3/4" x 7 1/2"	ea.	\$14.00	\$9.00
60"	3/4" x 7 1/2"	ea.	\$17.00	\$11.00

**Pine Landing Tread**     3/4" x 1 1/32" x 5 1/2" ( Plowed for 3/4" Flooring )     lft.     \$6.00

**Pine Tread Nosing**     1 1/4" x 1 1/32" Tread Nosing     lft.     \$2.00  
    Pine Tread Nosing Applied to One End of Tread     ea.     \$22.00

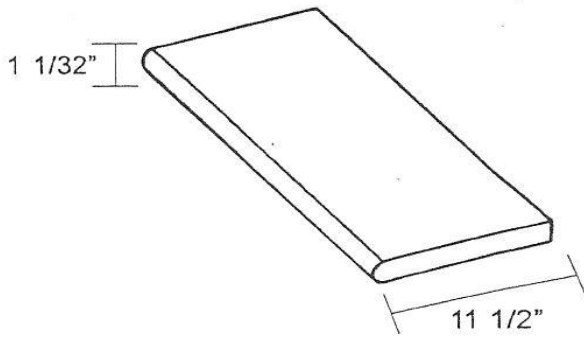
**Pine Hand Rail**

6010	TRADITIONAL RAIL SOLID	lft.	\$9.00
231	WALL HAND RAIL SOLID	lft.	\$2.00

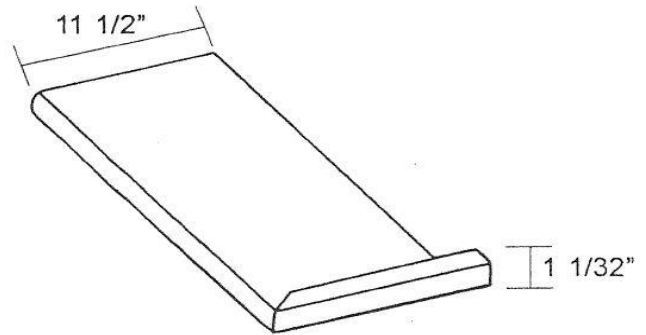
---

PRICE SUBJECT TO CHANGE WITHOUT NOTICE

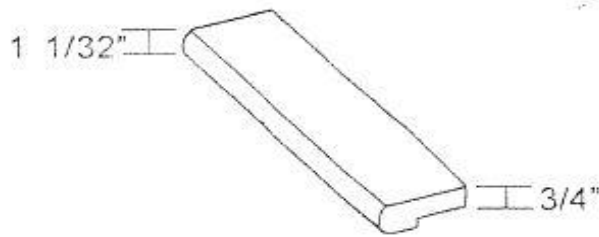
**TREADS**



8070 PLAIN TREAD



8070MR SINGLE MITERED  
RETURN TREAD



LANDING TREAD

## Discontinued Subject to Current Inventory

### Oak Newels

SW-4093	3" X 48" Volute/Turnout Newel	ea.	\$70.70
SW-4017	3" x 72" Landing Newel	ea.	\$90.00
SW-4091-F	5 1/2" x 55" Fluted Newel	ea.	\$189.10
SW-4091-XLF	6 1/4" x 55" Fluted Newel	ea.	\$219.00
SW-4091	5-1/2" x 55" Box Newel	ea.	\$168.80

### Oak Balusters (for SW-6010 or SW-6010-P rail systems)

SW-5015	1 1/4" x 31" Colonial	ea.	\$8.50
	1 1/4" x 34" Same	ea.	\$11.50
SW-5067	1 1/4" x 31" Turned Center	ea.	\$9.20
	1 1/4" x 34" Same	ea.	\$9.60
	1 1/4" x 36" "	ea.	\$10.20
	1 1/4" x 39" "	ea.	\$10.00
	1 1/4" x 41" "	ea.	\$10.90

### Oak Rail Stock

SW-6010	TRADITIONAL RAIL with Solid TOP	14'	ea.	\$123.80
SW-6010-P	PLOWED Traditional RAIL with Solid Top with FILLET	14'	ea.	\$156.00
SW-6010-B	Traditional Bending Rail ( Random Length Only )		lf.	\$15.10
SW-6010-BM	Bend Rail Mould for Traditional Rail ( Mixed Wood )		lf.	\$1.40
SW -6042	Wall Rail 2 1/4" x 19/32"	10'	ea.	\$42.80
		14'	ea.	\$50.00
(FINGERJOINT every 4' all lengths)				
SW -6040	Wall Rail 1 3/4" x 1 5/8"	10'	ea.	\$38.50
		14'	ea.	\$53.90
(FINGERJOINT every 4' all lengths)				
SW -6045	Plowed Shoe Rail with FILLET	10'	ea.	\$41.80
		14'	ea.	\$58.60
(FINGERJOINT every 4' all lengths)				



# Discontinued Subject to Current Inventory

Page:H-17  
9/21/20

## Oak Rail Fittings

( for 6010 or 6010-P Rail )

SW-7015	Starting Easing		ea.	\$20.60
SW-7016	Over Easing		ea.	\$20.40
SW-7020	Tandem Cap		ea.	\$17.20
SW-7080	Left Hand (with Cap)	1 Riser	ea.	\$35.00
SW-7085	Right Hand (with Cap)	1 Riser	ea.	\$35.00
SW-7090	Left Hand	1 Riser	ea.	\$41.70
SW-7088	Straight (with tandem cap)	2 Riser	ea.	\$44.00
SW-7097	Straight (with cap)	2 Riser	ea.	\$37.30
SW-7060	Left Hand (with cap)	2 Riser	ea.	\$59.10
SW-7065	Right Hand (with cap)	2 Riser	ea.	\$59.10
SW-7081	Left Hand (with cap)	2 Riser	ea.	\$46.40
SW-7086	Right Hand (with cap)	2 Riser	ea.	\$46.40
SW-LBROAK	30" Newel Bracket Molding		ea.	\$13.70
SW-8015	42" to 48" Bull Nosed Two Ends ( Adjustable )		ea.	\$277.00
	48" to 54" Bull Nosed Two Ends ( Adjustable )		ea.	\$294.50

## Oak False Tread & Riser Ends

SW-8010-2	False End Starting Step W/Cove & Shoe		ea.	\$83.30
-----------	---------------------------------------	--	-----	---------

## Rail Stock

Rails Below are Hemlock Fir

SW-H6010	2 1/4" x 2 3/8"	14'	ea.	\$58.70
SW-H6040	1 3/4" x 1 5/8"	14'	ea.	\$22.20

## Primed Balusters

( for SW-6010 or SW-6010-P Rail )

SW-PR5015	1 1/4" x 31" Colonial		ea.	\$4.60
-----------	-----------------------	--	-----	--------